



DRIVE THE FUTURE

Pierre-Henri Bonnaud
Software LABS

Robotics for Automotive

WILL AUTONOMOUS DRIVING
APPLY FIRST ON ROBOVEHICLE
OR AUTONOMOUS PASSENGER
CAR ?

AD is a major disruption and drive heavy investments in Robotics

ADAS

(L1, L2, L3)



Driver is the last resort

Driver reliability proof



Driver training + experience

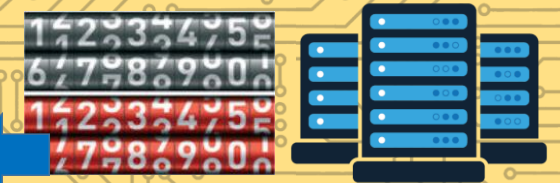
AD

(L3+⁽¹⁾, L4, L5)



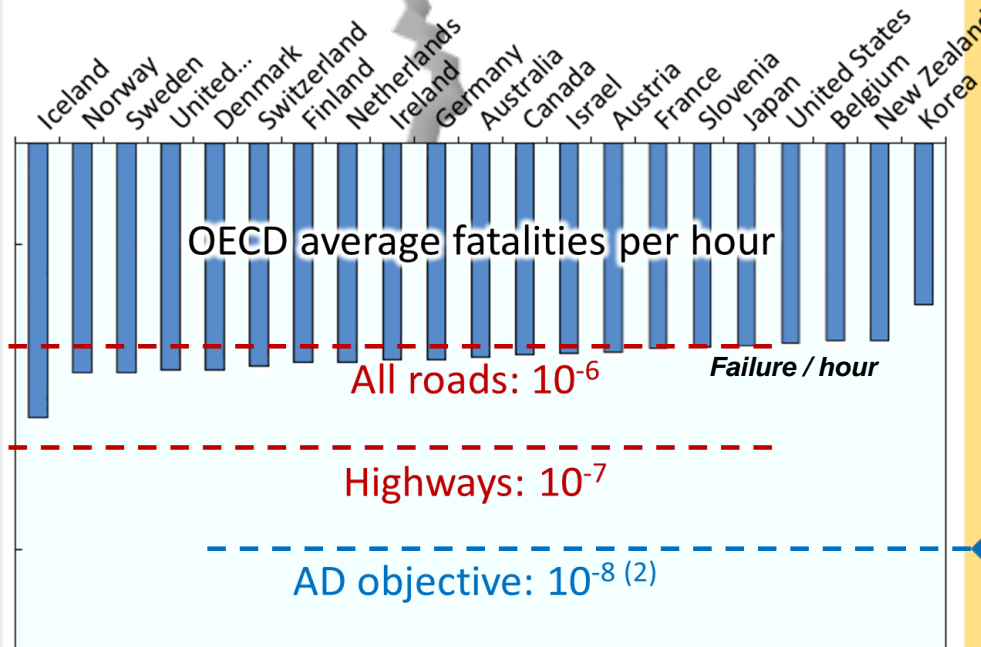
System is the last resort

System reliability proof



Massive mile accumulation + resimulation

- (1) *Emerging German L3 standard (Audi, BMW, Daimler)*
- (2) *Emerging consensus among European OEM*



This heavy investment disrupt the business model of big Automotive OEMs



ROBO VEHICLE

- Reduced numbers of driving use cases and resulting system and validation complexity
- Change in business model (car sharing)
- Business model can support expensive Bill Of Materials

PASSENGER CAR

- Keep existing driving conditions and environments, with heavy complexity and safety requirements
- Business model unchanged (based on cost of ownership)
- Business model can only afford limited cost adder

What will be the first AD robotics application for automotive?